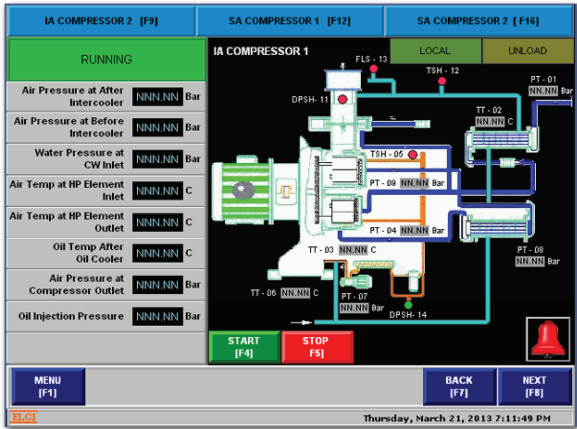


# Common Control Panel for Air Compressor Systems

## Features

- \* To Implement a SCADA control system for a CCP.
- \* To Monitor the Compressor utilization , Switch OFF and ON the compressors based on plant requirement.
- \* CCP and PCs in the Network are Time synchronization using Global Positioning System and Common control panel for Air Compressor system.
- \* To Communicate all information to DCS through Ethernet TCP/IP.
- \* Capture vibration Monitoring system parameters and communicate to DCS.
- \* Annunciator panel is installed to indicate the state of field I/O's.



## Specifications

PLC	Control Logix L61 redundant system (1756-L61, 230VAC, 2MB, Remote I/O, EtherNet IP, ControlNet, DeviceNet )
Input	Flex Digital Input 128 Nos Flex Analog Input 12 Nos
Outputs	Digital Output 180 Nos
Networking	Control Net distributed IO modules network
Communication	Ethernet TCP/IP
Panels	Rittal panel with IP 55
Compliance	IEC UL/CSA
SCADA	Factory Talk - ME
Project Implemented	A leading Indian multinational conglomerate having presence in Construction, electrical field etc
Duration of Project	One Month
Scope of our Supply	Design, Development, manufacture of Panels and SCADA development and implementation.