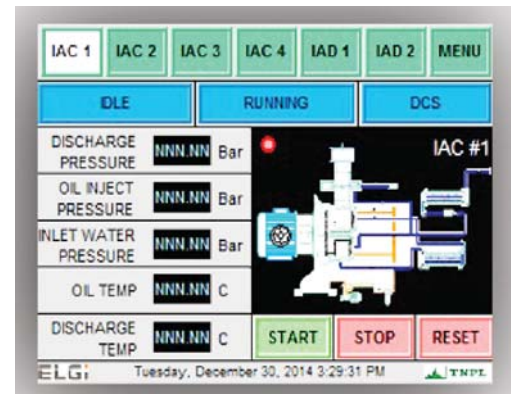


Common Control Panel for Air Compressor Systems

Features

- * To Implement a Cluster Compressor Control and Monitoring system for a Common Control Panel
- * To Monitor the Compressor utilization, Switch OFF and ON the compressors based on plant requirement
- * To Communicate all information to DCS through Modbus RTU
- * Capture vibration Monitoring system parameters and communicate to DCS



Specifications

PLC	Micro Logix ML1400 (1766L32BXB, 24VDC, 20KB RAM, RS232, RS485, EtherNet/IP, Modbus TCP/IP, DNP3 over IP)
Input	Digital 36 Nos Analog 16 Nos
Outputs	Digital 12 Nos Analog 04 Nos
HMI	Panel View 6" Display
Networking	Ethernet IP
Communication	Modbus RTU to interface with DCS and VFD Control
Panels	Rittal panel with IP 55
Compliance	IEC UL/CSA
Project Implemented	Tamilnadu
Duration of Project	Two Months
Scope of our Supply	Design, development, manufacture of Panels and Scada development and implementation

Applied Control Equipment Systems

S.F.No.415, Codissia Road, Opp.Geethanjali School,
Peelamedu, Coimbatore - 641 004.

Contact : +91 948 755 3082

E-Mail : appliedcontrol@gmail.com